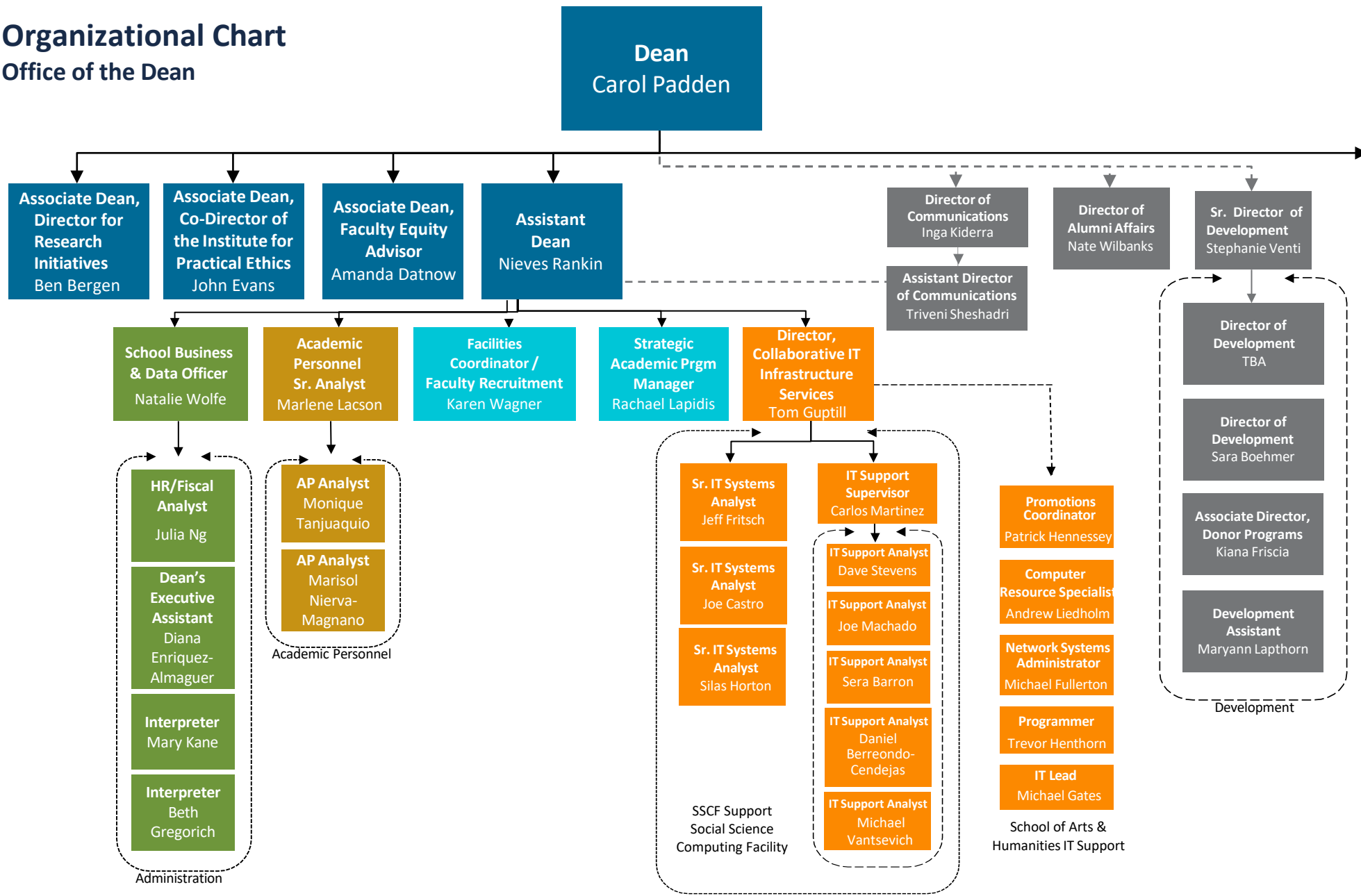


### Organizational Chart Office of the Dean



- #### Academic Departments
- Anthropology
  - Cognitive Science
  - Communication
  - Economics
  - Education Studies
  - Ethnic Studies
  - Linguistics
  - Political Science
  - Psychology
  - Sociology
  - Urban Studies & Planning

- #### Interdisciplinary Programs
- Computational Social Science
  - Critical Gender Studies
  - Global Health
  - Human Developmental Sciences
  - Latin American Studies

- #### Other Interdisciplinary Programs and Studies
- African Studies
  - Center for Global California Studies
  - Cognitive Science Program
  - Contemporary Issues
  - Health Care and Social Issues
  - Human Rights and Migration
  - Language and Communicative Disorders Program
  - Law and Society
  - Science Studies
  - Science, Technology and Public Affairs

- #### Research Centers
- African and African-American Research Center
  - American Politics and Institutions Project
  - Black Studies Project
  - Center for African Political Economy
  - Center for Comparative Immigration Studies
  - Center for Environmental Economics
  - Center on Global Justice
  - Center for Human Development
  - Center for Iberian & Latin American Studies
  - CREATE
  - Center for Research in Language
  - Center for the Study of Gender in the Professions
  - Center for Urban Economics
  - Center for US-Mexican Studies
  - Institute for Applied Economics
  - Institute for International, Comparative, and Area Studies
  - Institute for Neural Computation (with JSOE)
  - Kavli Institute for Brain and Mind (with Biology)
  - Laboratory of Comparative Human Cognition
  - Project in Cognitive and Neural Development
  - San Diego Education Research Alliance
  - U.S. Immigration Policy Center
  - The Yankelovich Center for Social Science Research